



European- and US-Patent  
Extremely high operation speed  
Perfect co-operation  
with mechanic and electronic



electric or pneumatic driven **Hydraulic Pumps**

**alkitorc<sup>®</sup>**

# EHP Electrical-Hydraulic Pump EHPC Electrical-Hydraulic-Pump Compact

**alkitrc® Electrical-Hydraulic Pumps are suitable for all international electric networks.**  
**Power- and frequency range: 100-253V / 45-66Hz**

**Product types: EHP** - Standing device with transport frame and „complete“ protection. **EHPC/EHPCplus** - compact and portable equipment with low weight and Protection Class **IP54**.

● **EUROPEAN-PATENT** - EP 1400313 **US-PATENT** - 6,966240

## The revolutionary *alkitrc®* conception:

- **No magnetic control valves!**  
The **direction switch of the drive motor** assures powerful but careful changeover from power stroke to idle stroke. "Gentle" operation guarantees long life of the tools.
- **Minimal heat production of hydraulic oil**  
Due to CW-/CCW motor direction an overflow of heat into the oil tank is nearly impossible
- **Suitable for continuous operation, low running costs**  
Drive via maintenance-free and low in wear synchronized motor, frequency controlled and brush-free
- **Processor controlled motor regulation**  
speed-, pressure- and volume dependent control
- **Perfectly adjusted oil flow,**  
due to 3-stage-operation
- **Environmentally friendly:** low sound level
- **alkitrc® Electrical-Hydraulic Pumps**  
suitable for nearly all customary hydraulic torque tools, independent of the cylinder size and torque range



### Hydraulic Pump EHP

Cooling of the drive via an **integrated motor ventilation**. Protection Class **IP54 optionally**

## Individual regulation possibilities:

- **Manual control:**  
By pressing the button trigger the cylinder piston of the connected hydraulic tool is extended. When loosening the piston is being retracted. The motor automatic shuts off after 2-3 seconds.
- **Automatic control:**  
The „Start“ function enables the working piston to either extend or retract automatically, whereas 19 different time intervals correspond to 19 different types of torque tools. Assignment of respective time intervals to the corresponding tool can be adjusted manually on the spot.

Remote Control FBE (5 m)

### Hydraulic Pump EHPC



# EHP / EHPC

# EHPCplus Electrical-Hydraulic-Pump Compact - version plus



EHPC/EHPCplus with Protection Class IP54

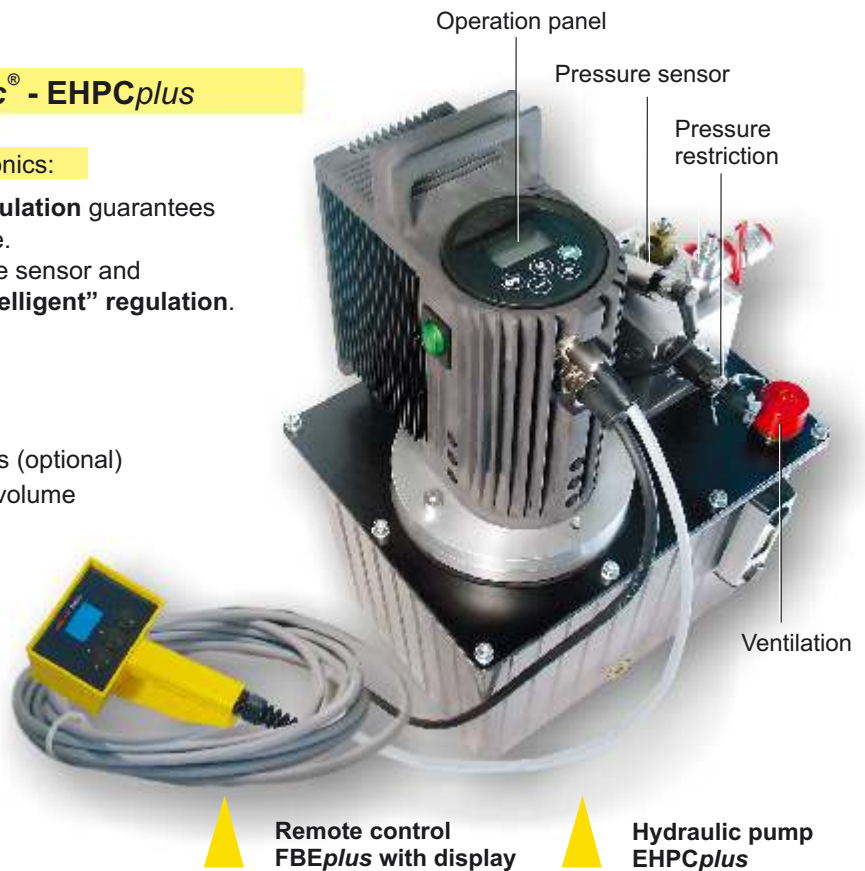
## Competence and innovation: *alkitorc*<sup>®</sup> - EHPCplus

### ● The hydraulic pump with outstanding mechatronics:

The innovation of the **pressure optimized regulation** guarantees the best possible use of the pump performance. The constant communication between pressure sensor and microprocessor realizes a completely new “**intelligent**” regulation.

#### Advantages:

- Precise pressure- resp. torque setting
  - **Simple calibration** of pressure resp. torque
  - Documentation of pressure- resp. torque values (optional)
  - **Automatic detection** of cylinder sizes and oil volume
  - **Extremely high operational speed**
- 
- **Simple and practically orientated handling**
  - Central operation panel e. g. for: pressure settings, selection of operating modes ...
  - Menu operation and displays via LC-Display



## Convincing safety: The *alkitorc*<sup>®</sup> - motor protection

- **EHP-** and **EHPC-Series** with automatic safety control. The **temperature controlled safety function** protects the motor fast and reliable against possible damages due to overload. An oil cooler **is not necessary**.

## *alkitorc*<sup>®</sup> - Electrical-Hydraulic Pumps with remote control up to 700 bar infinitely variable (700 bar max. pressure)

Designation / Ref. No.	EHP / 71501	EHPC / EHPCplus 71506 / 71513
Drive electrical	110/253 V - 45/66 Hz	110/253 V - 45/66 Hz
Nominal sensitivity	2000 W max.	2000 W max.
Oil flow <b>low pressure</b>	10,5 l/min to 40 bar	9,5 l/min to 40 bar
Oil flow <b>high pressure 1</b>	2,5 l/min to 250 bar	2,2 l/min to 200 bar
Oil flow <b>high pressure 2</b>	0,6 l/min to 700 bar	0,5 l/min to 700 bar
Tank capacity	7 Litres	7 Litres
Weight <b>including oil</b>	approx. 26 kg	approx. 24,5 kg
Surrounding temperature	-20 ° C to +50 ° C	-20 ° C to +50 ° C
Noise emission	< 76 dB(A)	< 76 dB(A)
Dimensions L x W x H (mm)	330 x 250 x 530	330 x 250 x 450
Protection art	Special version	<b>IP 54</b>
	<b>EHP- IP54, Ref.-No. 71502</b>	

**Hydraulic oil:** HLP 46 (additional hydraulic-oil grades upon request)

# EHPCplus

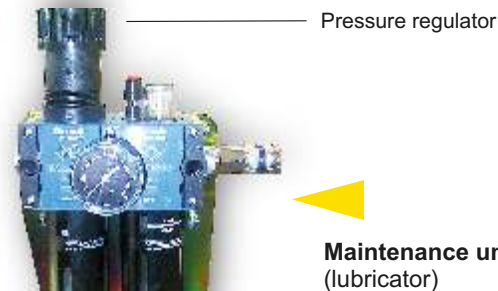
## The *alkitorc*® - LHP- Advantage:

- LHP - air-driven hydraulic pump **small, compact** and **powerful**
- Operating stroke / reverse running - via **Safety-Remote Control** (FBL)
- Environmentally friendly: **Low noise level** due to constructively highly developed sound absorption

**Suitable for applications within areas with air networks and within ex-protected working environment.**

Oil flow resp. air volume are decisive parameters for the operation speed. Torque adjustable via air supply and a manostat of the maintenance unit.

An air pressure of 2-6 bar at an air volume of approximately 10-15 l/sec ensures optimal operating.



### Accessories

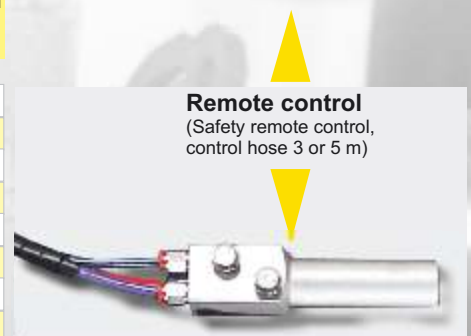
Maintenance unit complete with filter, regulator, lubricator as well as hose (5 m length) including couplings.

In order to maximize operational safety and the lifetime of the pneumatic wrench, the pressurized air should be fed by means of a lubricator with a fine oil spray.

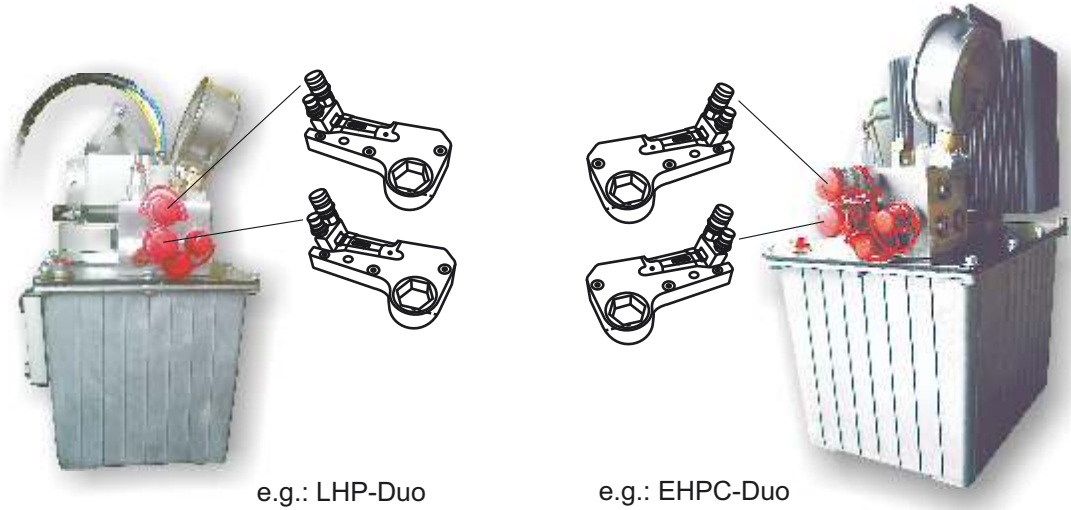


## *alkitorc*® - Pneumatic-Hydraulic Pump with remote control infinitely variable up to 700 bar (operating pressure 700 bar max.)

Designation / Ref. No.	Type LHP / 71508
Drive	pneumatic
Inlet air pressure/Volume flow	2 - 6 bar / 10-15 l s <sup>-1</sup>
Oil flow (low pressure)	4,0 l/min to 40 bar
Oil flow (high pressure)	0,4 l/min to 700 bar
Tank capacity	7 Litres
Weight including oil	approx. 26 kg
Surrounding temperature	-20 °C to +50 °
Noise emission	< 78 dB(A)
Measures L x W x H (mm)	330 x 250 x 420
Price	
<b>Hydraulic oil:</b> HLP 46 (additional hydraulic-oil grades upon request)	

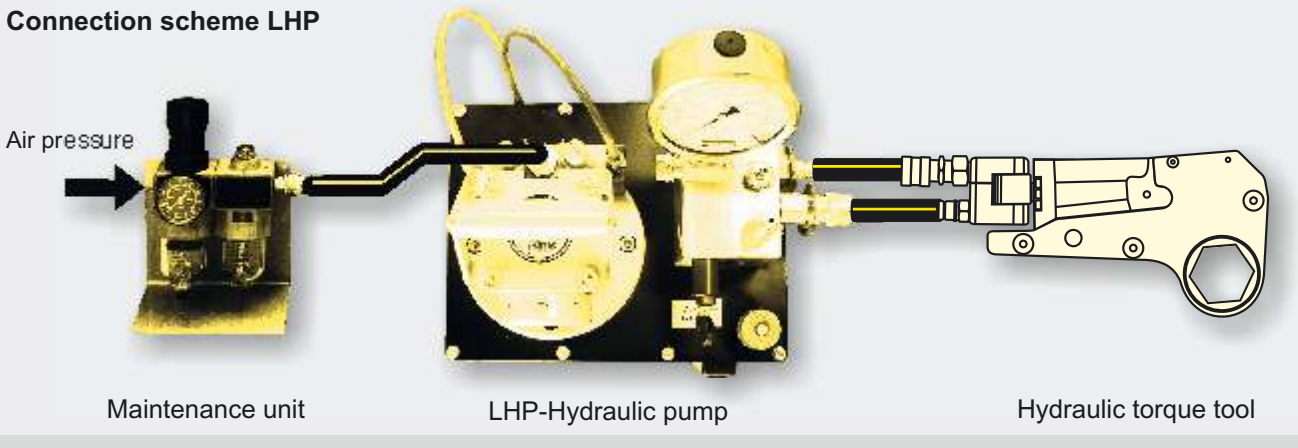


## alkitorc® - Hydraulic Pumps - Special Versions



All electric- or air-driven pumps are available as Duo- or Quattro-Version.  
i.e. 2 or 4 hydraulic torque tools can be connected to one pump!  
For further informations contact us.

### Connection scheme LHP



## alkitorc® - Delivery Range and Accessories

We deliver the **alkitorc® EHP/EHPC** with the remote control **FBE** (cable length 5 m), the **alkitorc® LHP** with the remote control **FBL** (hose length 3m or optional 5m). The required high-pressure connections (coupling and nipple) as well as the manometer (0-700 bar, Class 1.0) are supplied with the tool.

## alkitorc® - Standard-Hydraulic Hoses

Rated for 1000 bar, completely with high-speed joint coupling

Designation	BHDS 02	BHDS 2	BHDS 5	BHDS 10
Ref.-No.	71001	71043	71003	71004
Length	0,2 m	2 m	5 m	10 m
Price				

Further sizes upon request



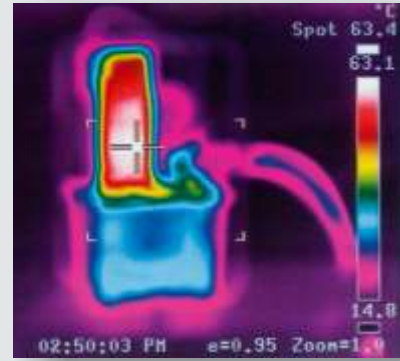
The **alkitorc®**-Hydraulic hoses are delivered with attached coupling and nipple. Thus a wrong connection is avoided.  
**We recommend to order in pairs (2 pieces).**

Our Hydraulic pumps  
are subjected to strict inspections  
within extensive series of tests

e. g.: **alkitorc® EHP**

Continuous temperature test -  
Documentation with heat camera

Calibration works at the "worlds´ largest" Static  
Dynamic Measurement-Simulator  
**alkitronic® - SDMS 2000** (up to 200.000 Nm)



### alkitorc® Hydraulic Torque Tools

Series ATZ

Series AT



For our large range of Hydraulic Wrenches contact us

**alki TECHNIK** • D-85051 Ingolstadt  
Phone +49 841 97499-0  
Fax. +49 841 97499-90  
Email: [info@alkitechnik.de](mailto:info@alkitechnik.de)  
[www.alkitechnik.de](http://www.alkitechnik.de)

**alki**  
**TECHNIK**  
GMBH

design by [www.4p-design.de](http://www.4p-design.de)