

Cleco[®]



Flexibility. Traceability. Portability.

The New Mobile Assembly Station

COOPER PowerTools

Flexibility. Traceability.

The Mobile Assembly Station (MAS) combines accurate transducerized nutrunners, secure database storage and an intuitive user interface making it ideal for repair area assembly, backup of the main assembly line or entire product assembly.

The Mobile Assembly Station supports an unlimited number of programmable torque applications which are selected via the included industrial PC or by an optional bar code scanner.

The MAS can interface with up to three Cleco 18/48 series corded DC electric nutrunners. For the ultimate in flexibility, MAS can also be interfaced with up to five Cleco LiveWire™ tools. That's eight tools in total, covering torque from 2 to 230 NM.

Features

- Interface with up to eight (8) separate tools
 - Up to three (3) Cleco 18/48 DC electric tools
 - Up to five (5) Cleco LiveWire™ tools
- Interface with static torque wrenches
- Interface with barcode scanners
- Integrated industrial PC
 - Keyboard with storage drawer
 - USB user port
- Preinstalled torque cart software
- 15" full color LCD display
- Custom-designed industrial grade cart.
- 6" polyurethane casters
- Three (3) external tool storage shelves
- Four lockable internal storage drawers
- Integrated forklift slots



Ability. Portability.

Develop

- Assembly parameters programmed via MS Access away from the distractions of the production environment
- Full control over the process including torque, fastening speed and angular rotation

Perform

- MAS guides user step by step through the entire process, prohibiting advancement until the job is done right
- MAS contains entire assembly process allowing repair bay operators to select the job that needs to be done

Analyze

- Data can be analyzed on the MAS or exported using the standard USB interface
- Torque data can be analyzed by either part or process
- Each fastening event stores torque, angle, time/date of event, status, etc.

Flexibility

For ultimate flexibility the MAS can interface with up to (5) LiveWire cordless or LiveWire VMAX tools. Tools can be added as they are needed without any hardware modifications. For a more traditional solution, the MAS can be fitted with up to (3) corded DC electric tools.



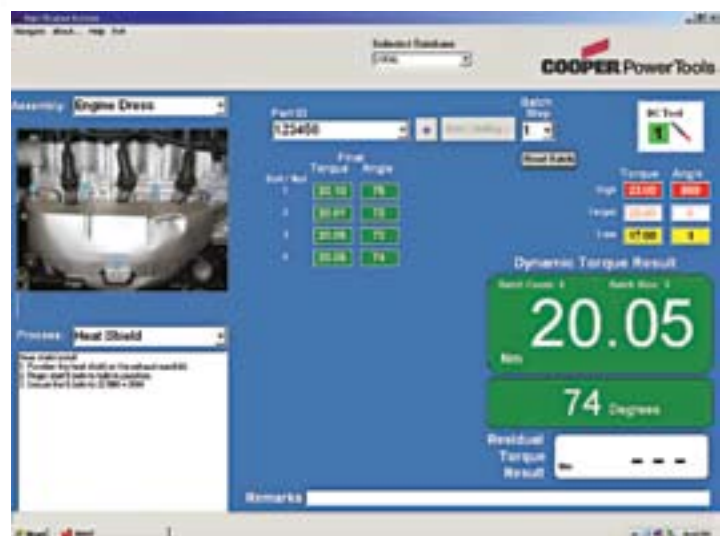
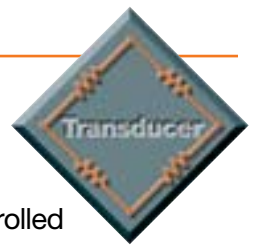
User Interface

User interface software allows for full customization.

- Show a picture of the actual part to eliminate confusion and illustrate proper bolt tightening sequence.
- Add text work instructions to guide operator through the correct assembly process.
- Real time feedback to insure all bolts are tightening within your specifications.

Traceability

When using our LiveWire or 18/48 Series DC electric nutrunners, you can rest assured that the correct torque will be applied and recorded. Both products are controlled by a NIST traceable strain gage torque transducer. The MAS can also be used with optional static torque wrenches which also contain traceable strain gage torque transducers.



Mobile Assembly Station (MAS)



Mobile Assembly Station (MAS)

Model Number	LiveWire Interface	18/48 Series Interface		
	1 to 5 Tools	1 Tool	2 Tools	3 Tools
FC-20-N-15-U-L	●			
FC-21-M-15-U-E1		●		
FC-21-M-15-U-E2			●	
FC-21-M-15-U-E3				●
FC-21-M-15-U-E1L	●	●		
FC-21-M-15-U-E2L	●		●	
FC-21-M-15-U-E3L	●			●

Standard cart operates on 115VAC. Other options available upon request.
Standard operating language is English. Other languages available upon request.



Optional Equipment

Model Number	Description	Comments
572688	Static Torque Wrench Interface	Supports 1 wrench
572689-1	3/8" drive electronic torque wrench – 7.5-75 in.lbs.	Transducerized wrench with RF communication
572689-2	3/8" drive electronic torque wrench – 7.5-75 ft.lbs.	Transducerized wrench with RF communication
572689-3	1/2" drive electronic torque wrench – 25-250 ft.lbs.	Transducerized wrench with RF communication

Cooper Power Tools
P.O. Box 1410
Lexington, SC 29071-1410
USA
Phone: 800-845-5629
803-359-1200
Fax: 803-359-0822

Cooper Power Tools
4121 North Atlantic Blvd.
Auburn Hills, MI 48326
USA
Phone: (248) 391-3700
Fax: (248) 391-7824

Cooper Power Tools
5925 McLaughlin Road
Mississauga, Ontario
Canada L5R 1B8
Phone: (905) 501-4785
Fax: (905) 501-4786

**Cooper Power Tools
de México S.A. de C.V.**
Libramiento La Joya No. 1
Bodega No. 2
Esq. Politécnico
Barrio San José
Cuautitlán, Edo de México
C.P. 54870

Phone: +52-55-5899-9510
Fax: +52-55-5870-5012

Cooper Tools Industrial Ltda.
Av. Liberdade, 4055
Zona Industrial - Iporanga
18087-170 Sorocaba, SP
Brazil
Tel: +55-15-3238-3929
Fax: +55-15-228-3260

Cooper Power Tools SAS
Zone industrielle – B.P. 28
77831 Ozoir-la-Ferrière Cedex
France
Téléphone: +33-1-6443-2200
Téléfax: +33-1-6440-1717

**Cooper Power Tools
GmbH & Co. OHG**
Postfach 30
D-73461 Westhausen
Germany
Phone: +49 (0) 73 63/ 81-0
Fax: +49 (0) 73 63/ 81-222
E-Mail:
htwe.sales@cooperindustries.com

Cooper Tools Hungária Kft.
Berkenyefa sor 7
H-9027 Győr
Hungary
Tel: +36-96-505 300
Fax: +36-96-505 301

Cooper (China) Co., Ltd.
955 Sheng Li Road,
Heqing Pudong, Shanghai
China 201201
Tel: +86-21-28994176
+86-21-28994177
Fax: + 86-21-51118446

www.cooperpowertools.com

Cooper Industries, Ltd.
600 Travis, Ste. 5800
Houston, TX 77002-1001
P: 713-209-8400
www.cooperindustries.com

